



# ETTA RIDGE

*A New Collection of Mountain Residences*



## A Modern Mountain Retreat For a Life Shaped by Nature.

---

Etta Ridge is an exclusive new enclave of half-floor, three- to four-bedroom residences at Glacier, offering an idyllic lock-and-leave retreat unlike anything Southwest Colorado has ever seen. Embracing a warm, contemporary aesthetic inspired by its natural surroundings, each home puts you at the doorstep of year-round adventure and the coveted Glacier lifestyle, where world-class amenities and modern-day pampering round out your family's dream mountain experience.



The limited collection of homes features two versatile floor plans, **The Sundance** and **The Cassidy**, each with light-filled interiors and generous outdoor living spaces that encourage complete immersion in the natural world. Plus, with elevator access directly to your residence, as well as unrivaled proximity to a members-only pool and fitness center, your family can come and go with ease, revel in thoughtfully crafted comforts and experience the very best of this uncommonly magical corner of Colorado.





## An Inspired Setting to Call Home.

Perched atop a distinct promontory amid century-old ponderosa pines, Etta Ridge encompasses only five buildings with six residences in each, affording an intimate mountain experience immersed in the sights and sounds of the San Juan Range. With inspiring views of the rolling greens below and striking peaks beyond — including Hermosa Cliffs, Twilight Peak and Engineer Mountain — this is where families come to renew their spirits, recalibrate in nature and return home to the finest of luxuries.





Mountain Course Views

Valley Views

Twilight Peak, Needles, Engineer  
& Potato Mountain Views

Mountain  
Course Views

BUILDING 3

BUILDING 4

BUILDING 2

BUILDING 5

BUILDING 1

Glacier Club Drive

Hermosa Cliff Views



THE SUNDANCE THE CASSIDY MOUNTAIN COURSE



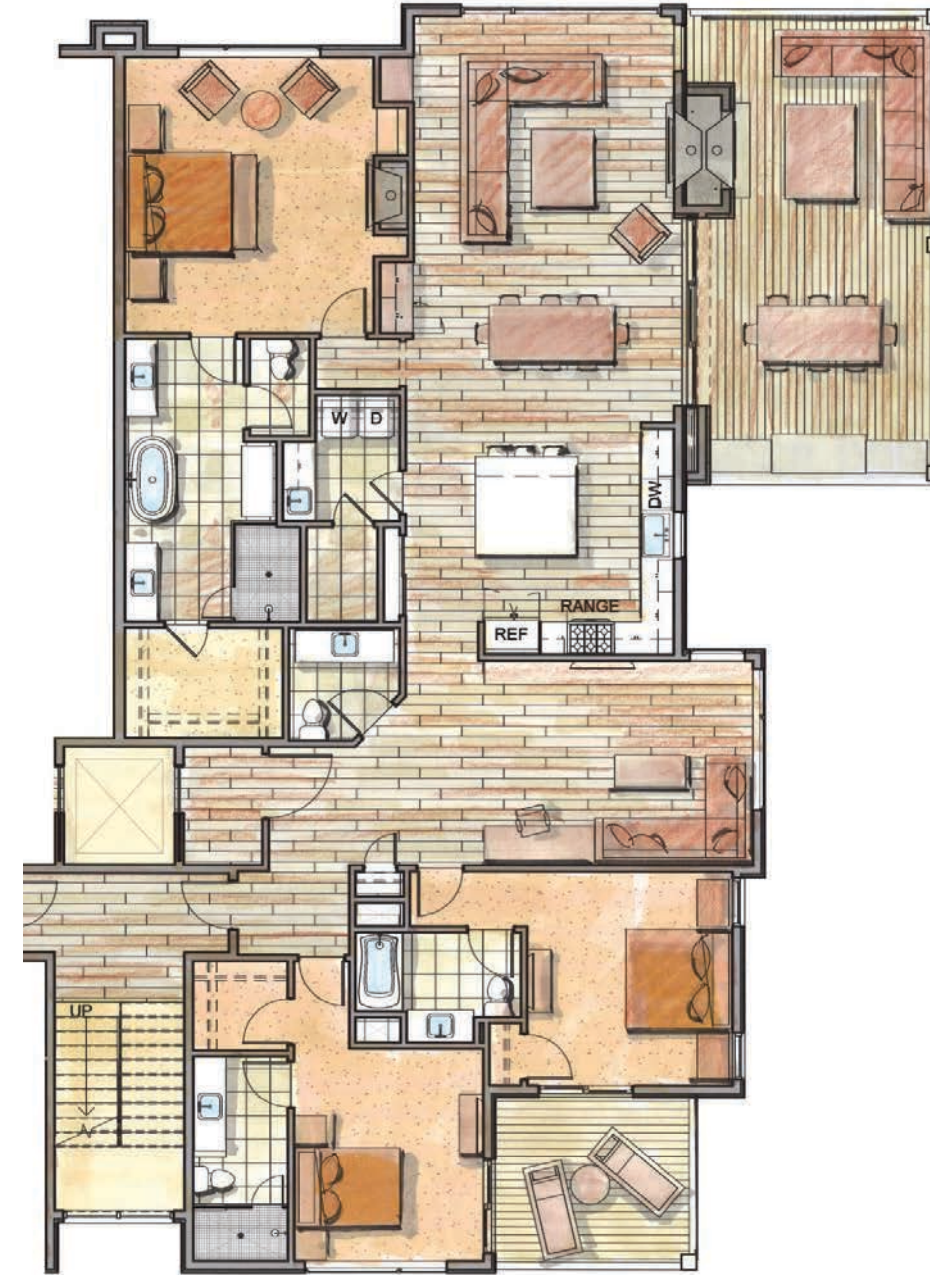
## THE SUNDANCE

**BEDROOMS**  
3 (Two Main Suites, One Guest Suite)

**BATHROOMS**  
3.5

**INTERIOR SPACE**  
2,649 S.F.

**EXTERIOR SPACE**  
641 S.F.



## THE CASSIDY

**BEDROOMS**  
3-4 (One Main Suite, Two Guest Suites, One Convertible Office)

**BATHROOMS**  
3.5

**INTERIOR SPACE**  
2,649 S.F.

**EXTERIOR SPACE**  
641 S.F.



## Mountain Living Shaped by Nature.

---

Surrounded by 14,000-foot peaks, storied mountain towns, national parklands and three million acres of protected wilderness, Etta Ridge sits at the threshold of Southwest Colorado's most diverse, enriching terrain.

And with Glacier's 36 holes of world-class golf, two fully appointed clubhouses, casual and fine dining venues and more, families reap the many rewards of naturally inspired living without sacrificing any modern comforts.



#### AMENITIES

- 18-Hole Mountain Course
- Mountain Clubhouse
- 18-Hole Valley Course
- Valley Clubhouse
- Fitness Center & Spa
- Tennis & Pickleball Courts and Cafe
- Four Swimming Pools







*Where the sky is bluer,  
the mountains are grander  
and life is lived adventurously.*



600 Glacier Club Drive  
Durango, Colorado 81301  
970.382.6766

[realestate@theglacierclub.com](mailto:realestate@theglacierclub.com) • [theglacierclub.com](http://theglacierclub.com)

**Wells  
Group**  
REAL ESTATE